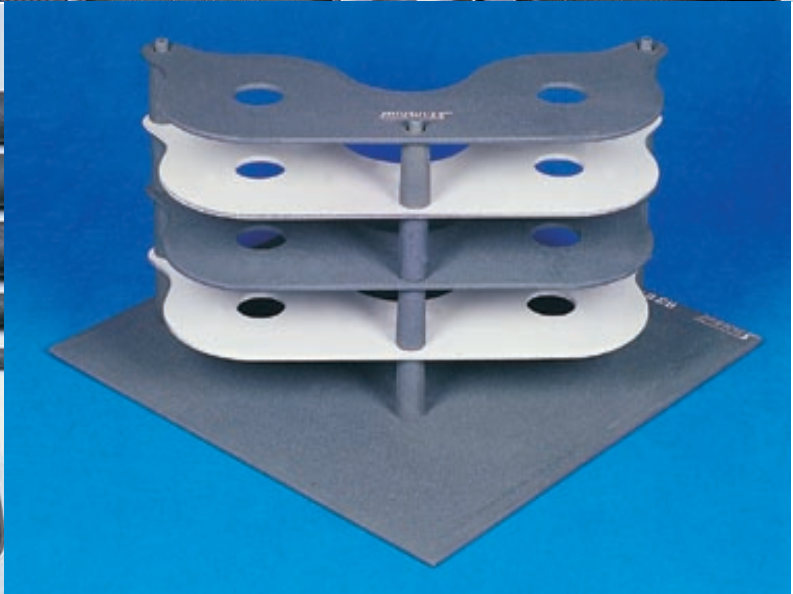
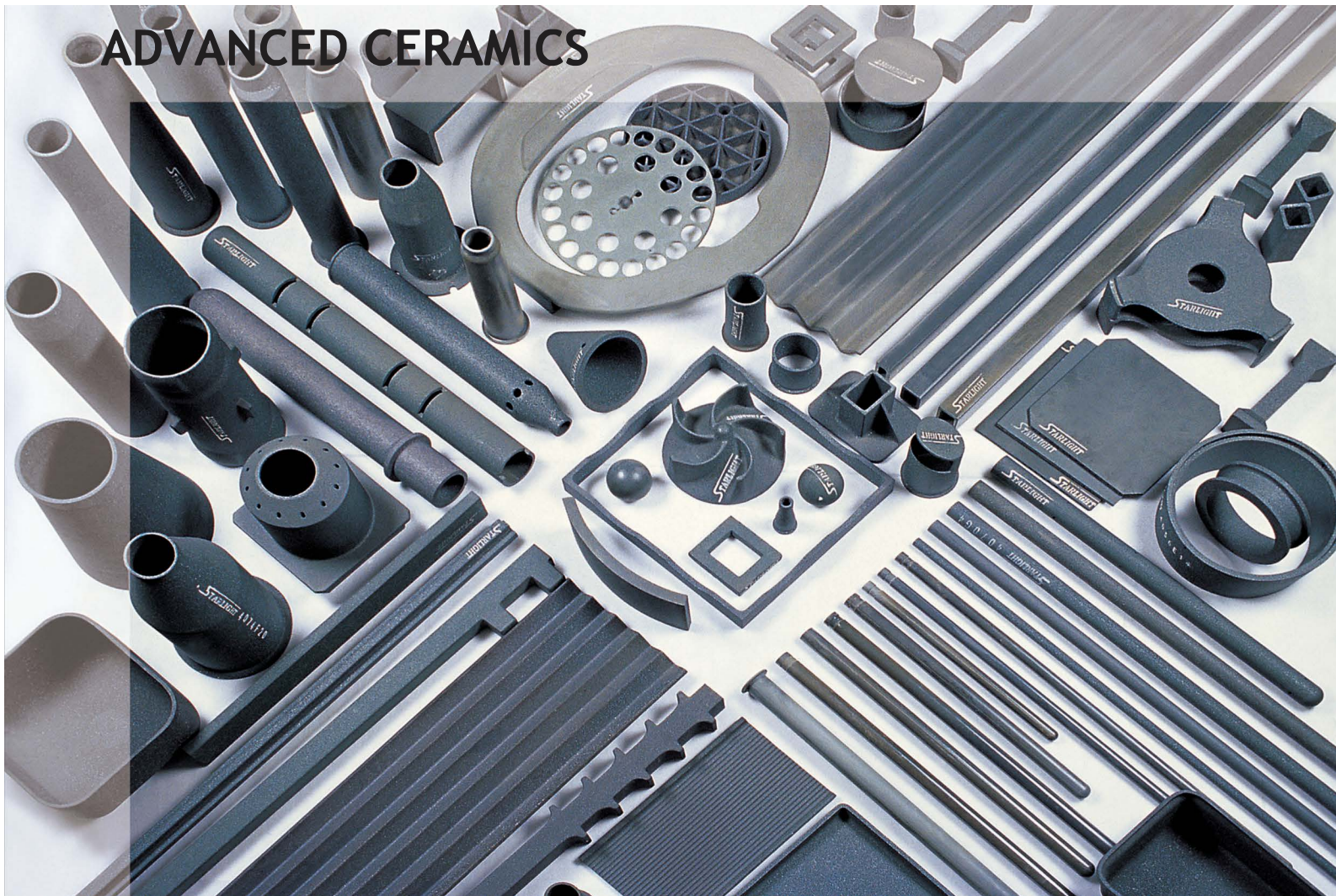


RS/C

*ADVANCED SIC PRODUCT, HIGH PERFORMANCE APPLICATION
COST-EFFECTIVE SOLUTION, VALUE-ADDED SERVICE*

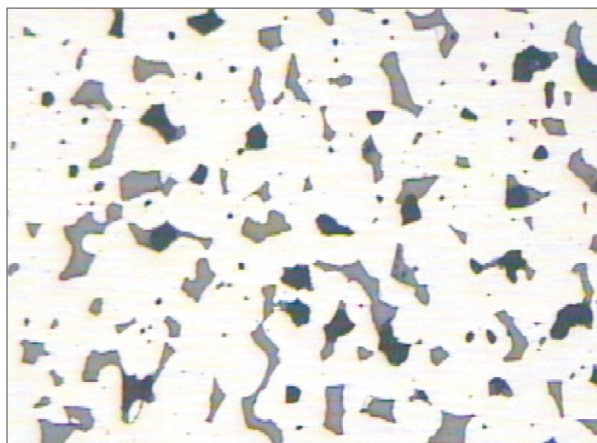
ADVANCED CERAMICS



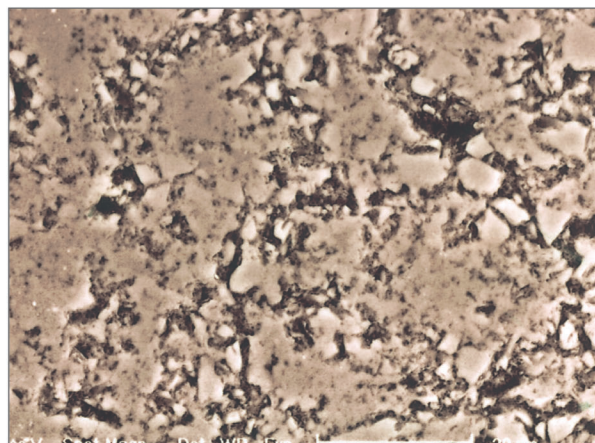
RSiC & NSiC Technical Data

Properties	Unit	RSiC Recrystallized Silicon Carbide	NSiC Nitride Bonded Silicon Carbide
Contents: SiC Si ₃ N ₄ Si	Vol%	≥99 0 0	≥75 ≥23 0
Bulk density 20°C	g.cm ⁻³	2.65 ~ 2.75	2.75 ~ 2.85
Apparent porosity	%	15 ~ 18	13 ~ 15
Moduius of rupture (at 20°C)	MPa	80 ~ 100	160 ~ 180
Moduius of rupture (at 1200°C)	MPa	90 ~ 110	170 ~ 180
Moduius of rupture (at 1350°C)	MPa	90 ~ 120	170 ~ 190
Moduius of crushing (at 20°C)	MPa	300	580
Thermal conductivity (at 1200°C)	w.m ⁻¹ .k ⁻¹	36.6	19.6
Thermal expansion (at 1200°C)	a × 10 ⁻⁶ /°C	4.69	4.70
Thermal shock resistance (at 1200°C)		Good	Excellent
Max. working temperature	°C	1620(oxid)	1450

- ♦ Note:Data of properties quoted are typical results from random samples and therefore should be used only as a reference.



SEM picture of RSiC



SEM picture of NSiC

RSiC Kiln Furniture Types & Application

RSiC Kiln Furniture:

- Beam
- Roller
- Plate
- Cooling tube
- Nozzle
- Thermal tube
- Structural parts
- Sagger

RSiC Kiln Furniture Application:

- Tableware
- Sanitary Ceramic
- Construction Tiles
- Technical Ceramic
- Electronic Ceramic
- Electric Ceramic
- Metallurgy
- Chemical Industry



1



6



2

- 1 RSiC Plates
- 2 RSiC thermal couple tube
- 3 RSiC setter batts
- 4 RSiC Nozzles
- 5 RSiC beam applied in shuttle kiln of electric porcelain
- 6 RSiC plate applied in roller hearth kiln



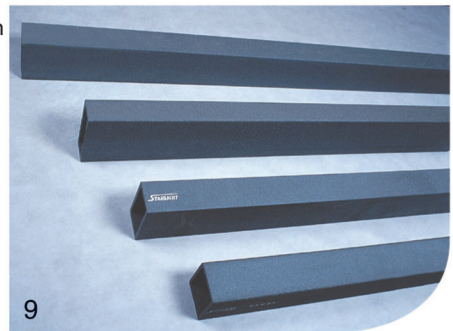
8



3



7



9



4



10



5

- 7 RSiC Saggars
- 8 RSiC beams & plates applied in high temperature shuttle kiln
- 9 RSiC Beams
- 10 RSiC Rollers
- 11 RSiC beam applied in shuttle kiln of sanitary ware



11

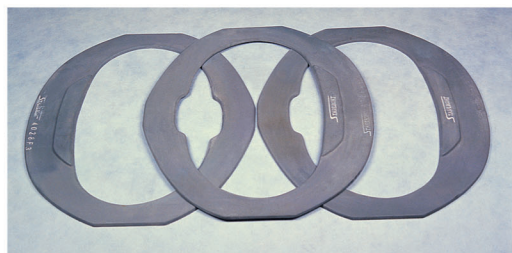
NSiC Kiln Furniture Types & Application

NSiC Kiln Furniture:

- Beam
- Roller
- Plate
- Cooling tube
- Nozzle
- Thermal tube
- Structural parts
- Sagger

NSiC Kiln Furniture Application:

- Tableware
- Sanitary Ceramic
- Construction Tiles
- Technical Ceramic
- Electronic Ceramic
- Electric Ceramic
- Metallurgy
- Chemical Industry
- Mechanics



NSiC Setters



NSiC Saggers



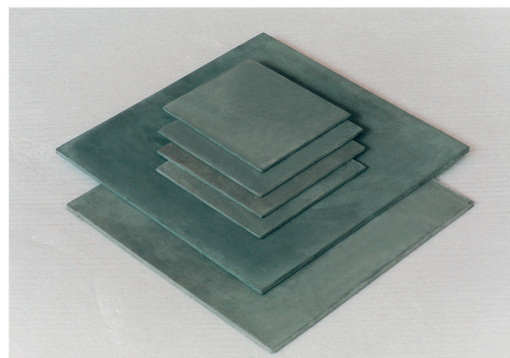
NSiC thermocouple tubes



NSiC Nozzles



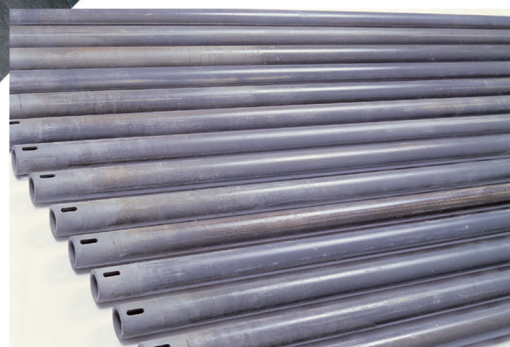
NSiC Saggers applied in powder industry



NSiC plates



NSiC Beams



NSiC Rollers



NSiC beams applied in shuttle kiln of sanitary ware

Perfect QC System, Global Marketing

The technical department is in charge of the technical parameter control and semi-products & finished-products inspection. All the managements including purchasing, manufacturing, designing and servicing meet ISO9001: 2000 quality system.

Our quality guideline is "create the top-of-the-line brand in kiln furniture field in China, and Meet the developing demand of customer continuously."



Vacuum experimental furnace



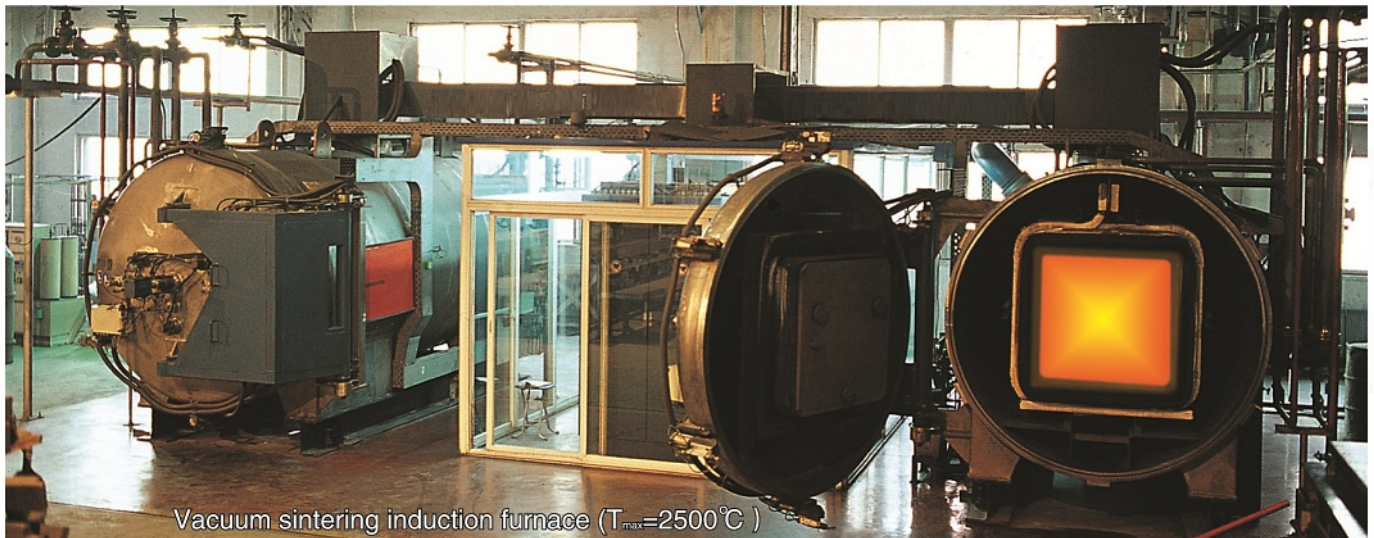
Material strength measurer



Specific surface area instrument



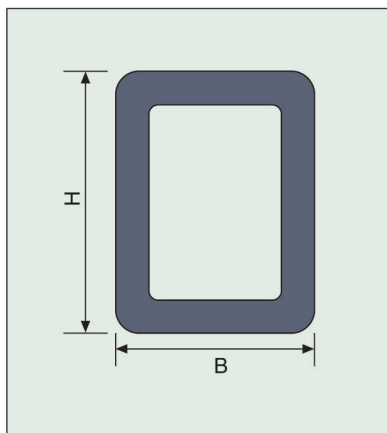
High resolution laser particle size analyzer



Vacuum sintering induction furnace ($T_{max}=2500^{\circ}\text{C}$)

General Product Specifications

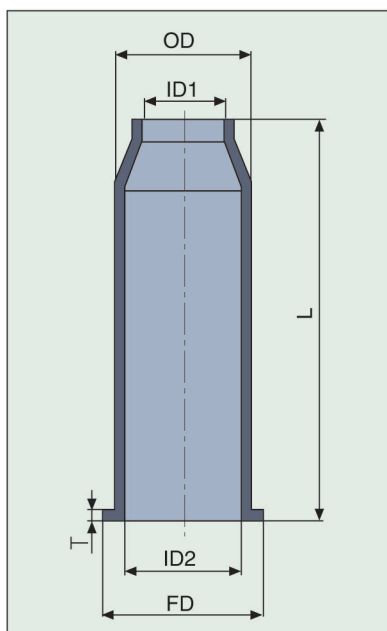
Beam



Standard beam

Drawing No.	Cross-section B × H(mm)	Max. Length (mm)
B3030	30 × 30	1500
B3040	30 × 40	1800
B4040	40 × 40	2200
B4050	40 × 50	2500
B4060	40 × 60	2500
B5050	50 × 50	2800
B5060	50 × 60	2800
B6070	60 × 70	3000
B6080	60 × 80	3000
B6090	60 × 90	3000

Nozzle



Standard nozzle

Inspection Item	Size (mm)	Tolerance
OD	Φ 40 ~ 300	± 1.0
ID2	Φ 30 ~ 280	± 2.0
FD	OD+(20 ~ 100)	± 1.0
L	40 ~ 600	± 1.5
T	4 ~ 10	± 1.0

Standard thermal couple tube

Drawing No.	Cross-section OD × ID(mm)	Max. Length L (mm)
T1510	15 × 10	800
T2013	20 × 13	1000
T2517	25 × 17	1250
T3022	30 × 22	1300
T3224	32 × 24	1300
T3527	35 × 27	1400
T3830	38 × 30	1500
T4030	40 × 30	1600
T4535	45 × 35	1800

Thermal couple tube

